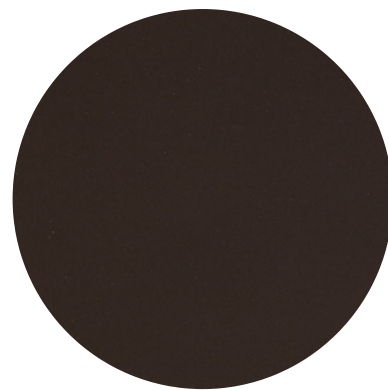


QF BROWN

The Qf collection consists of pure quartz, structural polyester resin and UV-stabilised colour pigments. The QF Brown surface has a uniform background and a medium grain, all brown in colour.



Format Standard

305 cm x 140 cm (4.27 sqm)
120" x 55" (45.96 sqft)

Thicknesses | Weights*

1.2 cm x 1/2" | 125 kg - 275 lb
2 cm x 3/4" | 208 kg - 459 lb
3 cm x 1 1/4" | 312 kg - 688 lb

Finish

glossy, matt

* The indicated weight can vary by about 5% due to the different weight specific for the various classes of product.

Category: 4

Apparent density EN 14617-1:2013	kg/cm ³	2408	W3 (EN 15285:2008)
Water absorption EN 14617-1:2013	%	0,04 - 0,07	W4
Flexural strenght EN 14617-1:2016	Mpa	51.9	F4 (EN 15285:2008)
Compressive strenght EN 14617-15:2006	Mpa	188	
Impact resistance EN 14617-9:2005	J	6	
Linear thermal expansion EN 14617-11:2005	10 ⁻⁶ °C ⁻¹	28.6	
Chemical resistance (HCl and NaOH) EN 14617-10:2012	Classe	C4 for hydrochloric acid C3 for sodium hydroxide	
Abrasion resistance EN 14617-:2012	mm	27.4	A4 (EN 15285:2008)
Slip resistance by means of the pendulum tester (polished finish) EN 14231-:2003		SRVdry= 44 SRVwet= 6	

Certifications



QUARTZFORMS

MADE IN GERMANY

Quartzforms SpA

Bruger Str. 10 D-39126 Magdeburg, tel +49 (0) 39 1 53 888 000, fax +49 (0) 39 1 53 888 010

info@quartzforms.com www.quartzforms.com

Colours and brightness of video and printed reproductions are indicative.

The slab simulates natural stone so, some changes are possible in the final product.